

R•LITE-X2 Put Yourself Ahead PRO

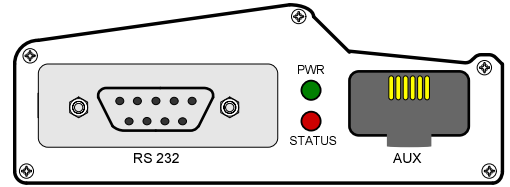
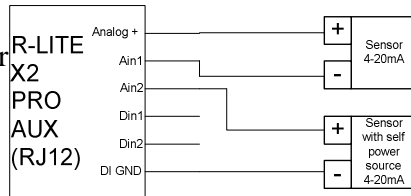


**Version 2.4
March 2009**

RLITE X2 PRO specifications

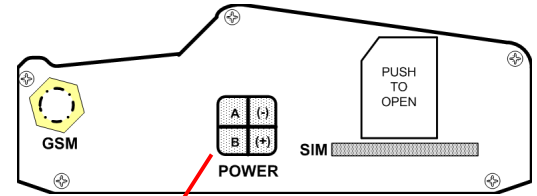
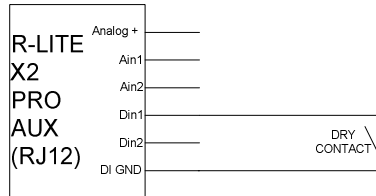
Cabling the R-LITE X2 PRO

Types of analog sensor inputs cabling



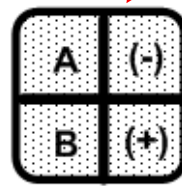
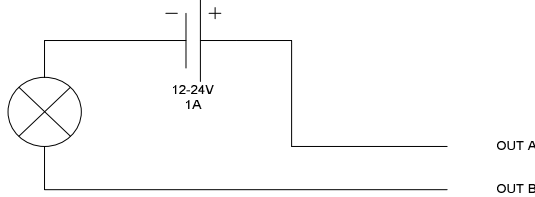
Front Panel Interface

Digital inputs cabling



Back Panel Interface

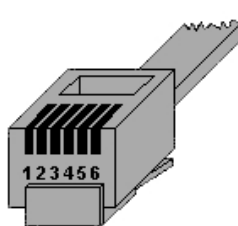
Digital output cabling



Power supply and relay output connector

POWER

RJ12 Pinout Information

Socket	Pin	Function	Description
 RJ12 (6P6C)	1	ANALOG +	Positive pole for analog sensor
	2	Ain 1	Analog input 1
	3	Ain 2	Analog input 2
	4	Din1	Digital input 1
	5	Din2	Digital input 2
	6	GND	Ground(-)

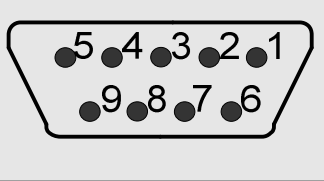


Warning: The RLITE PRO is floating device.

Make sure that no connection between the RLITE PRO unit and other electrical points.

Communication Port

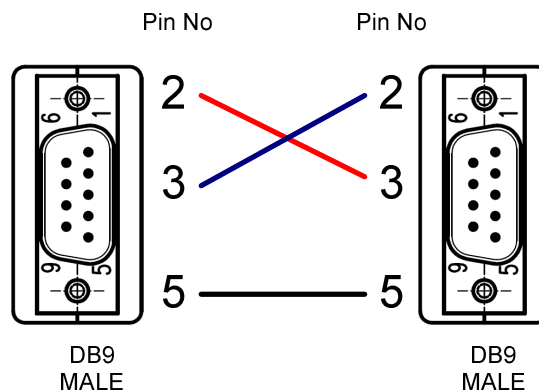
The RLite X2 PRO serial port communication is in one of 2 options: 232 or 485.
The communication pins are described below.

Socket	Pin	232 **		485 *	
		Name	Description	Name	Description
 DB9 FEMALE	1	CD	Carrier detect		
	2	RX	Receive		
	3	TX	Transmit	+	Data +
	4	DTR	Data Terminal Ready	-	Data -
	5	GND	Ground	GND	Ground
	6	DSR	Data Set Ready		
	7	RTS	Request To Send		
	8	CTS	Clear To Send		
	9	RI	Ring Indicator		

* For 485 communication it's recommended to connect a 100Ω resistor between the (+) and (-) connectors.

** For 232 communication it's recommended to use adapter as described below.

DB9 - Male to Male 3 wire Adapter:



Note: The 6 remains pins are not connected!



<u>Description</u>	<u>Specification</u>
<i>HW interfaces</i>	
RS-232 / RS-485	One DB9 male (standard EIA)
Analog Inputs	2 (4-20mA)
Digital Inputs/Output	2 Dry contact Inputs or 2 open collector Outputs
Digital Output	1 (Relay 1A at 12-24V)
Display	2 Leds (red, yellow)
<i>Physical Characteristic</i>	
Dimension	104 X 67 X 33 cm
Weight	200 gram
Assembly	2 screw handles
<i>Power supply Specification</i>	
Power supply	9-24VDC 1A
Active current	100mA
Stand by current	30mA
Protection	According to MIL-STD-704E
<i>Environment</i>	
Operating Temperature	-20°C to 70°C
Storage Temperature	-40°C to 85°C
Operating Humidity	5% to 95%
<i>Protocols</i>	
PLC protocols	MODBUS, Unitronics, Microlog, Hostlink, Izumi and more...

<u>Description</u>	<u>Specification</u>
<i>Cellular Network Interface</i>	
Band	Two Band/ Tri Band/ Quad band
Protocols	CSD, SMS, GPRS class 10, Mobile station class B
Internal modem	Telit 862
Modem Approvals	Fully type approved according to R&TTE CE, GCF, FCC, PCTRB, IC
Technology	GSM network + SIM card
Antenna	Internal antenna MMCX External antenna MMCX
<i>Analog input Specification</i>	
Number of input	2
Resolution bit	10 bit (0.02mA)
Conversion speed	10mS
Input Current	4-20mA DC
Precision	2% (0.4mA)
Input impedance	160Ω (10%)
<i>Digital input Specification</i> (optional)	
Number of input	2
Response time	20mS
Minimum pulse width	1s



Output Specification	
Number of output	1
Output type	Relay 1A/30VDC 0.5A/125VAC
Max switching voltage/current	220VDC/1A 250VAC/1A
Contact life cycle	200,000 operations minimum (contact rating)
Minimum load	0.01mA/10mV
Contact resistance or voltage drop	up to 50mΩ
Response time	3mS

R-LITE Approvals : CE, RoHs compatible.

Contact Information

Address: Industrial Area – Beit She'an, Israel,10800

Email: remmon@remmon.com

Phone: 972-4-6065815

Fax: 972-4-6065819

Website: www.remmon.com