



The CellPipe Installation Guide

Version 1.2

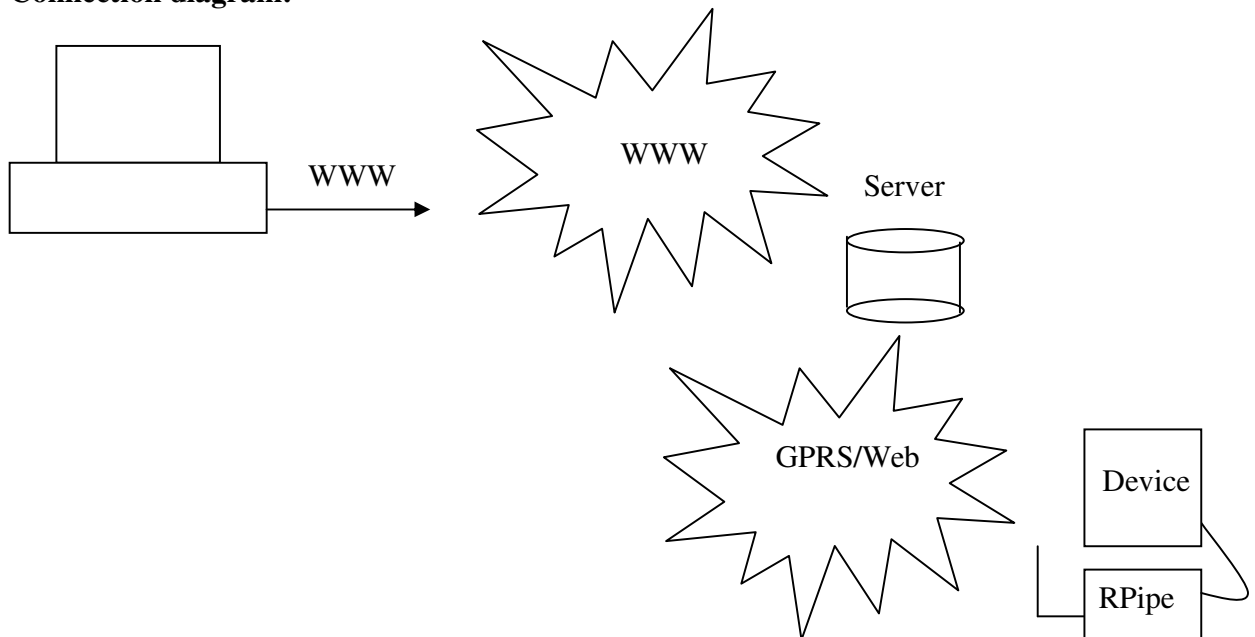
RemPipe Installation Guide

General: This document describes the installation and settings of Remmon CellPipe application software. The CellPipe is a useful tool for creating and loading virtual RS232 serial ports on your computer using Remmon web server. It provides a user-friendly graphical interface for creating up to 99 different virtual serial COMs on your PC. It maps a TCP communication port number to each of the COMs it has created. This easy-to-use software provides you with the necessary tools to establish a connection between your computer and your device through the GPRS network, using your device software.

Note: *Make sure that the appropriate TCP communication port number is unblocked.*

Please follow this step by step guide for proper configurations.

Connection diagram:





Installation:

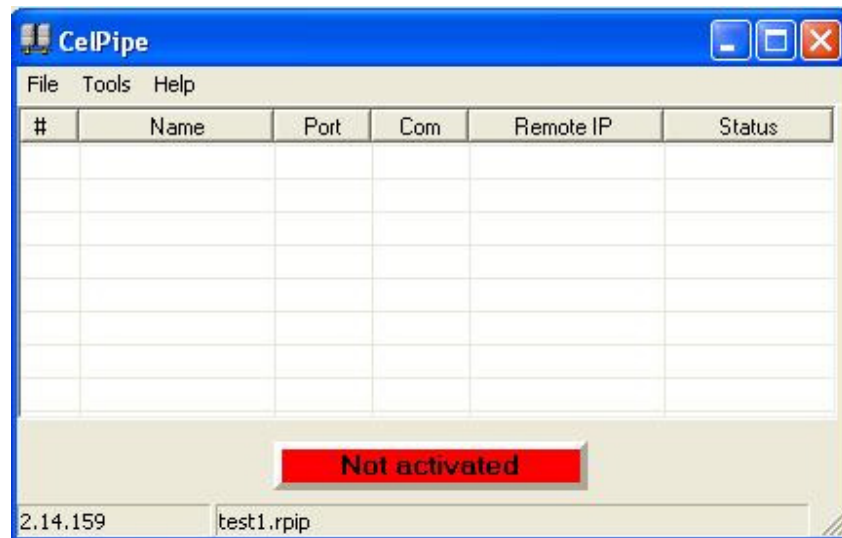
Run the setup program and follow the onscreen instructions, up to the point when you are asked to restart your computer. **Do not restart** your computer, go to the CellPipe installation directory (the default installation directory is <C:\Program files\Remmon Remote monitoring\CellPipe>) and double click on "vsbsetup.exe". A black screen may appear for a second and disappears. **Restart your** computer to finish the installation.

Running the program:

Running the CellPipe program requires administrator privilege.

Go to the CellPipe installation directory (the default installation directory is <C:\Program files\Remmon Remote monitoring\CellPipe>) and double click on the CellPipe.exe file.

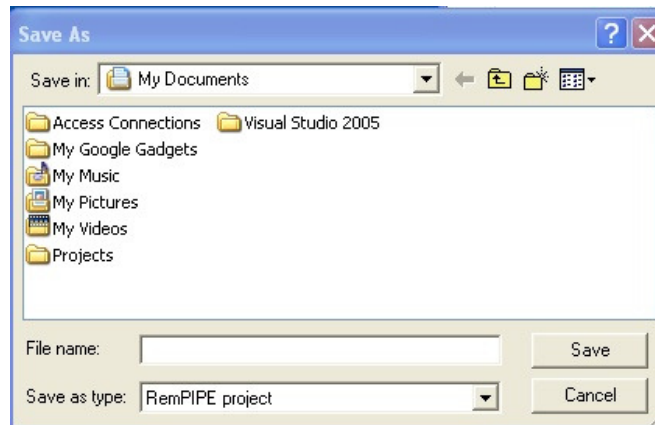
The following screen appears:





Creating new project:

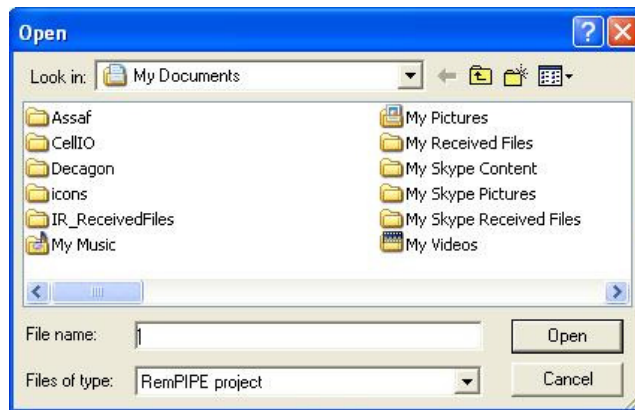
Go to the menu bar and click on File>>New. The following dialogue window appears:



In the *File name* textbox, type a name for your project, and click on *Save*.

Open project:

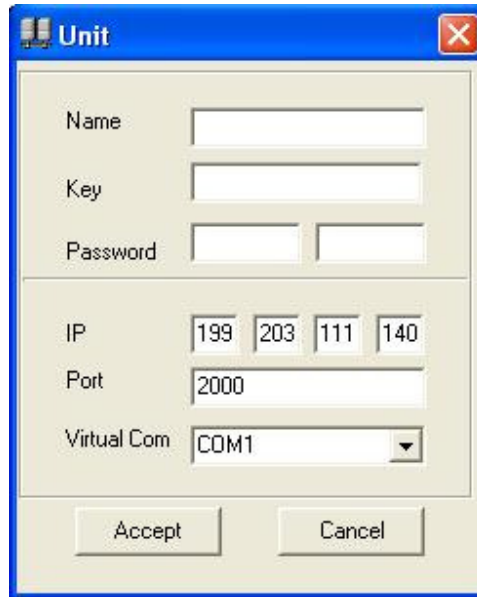
Go to the menu bar and click on File>>New. The following dialogue window appears:



In the *File name* textbox, type a name for your project, and click on *open*.

Setting new unit:

1. Before start – make sure you have the Key and Password of the unit (please contact your local provider for more information).
2. Go to the menu bar, click on *Tools>>Add unit*. The following dialogue window appears



3. In the *Name* textbox, insert name for the unit which you intend to add.
4. In the *Key* textbox, insert the unit product key.
5. In the *Password* textbox, insert the unit password.
6. In the *IP and Port* textboxes, insert the server IP and appropriate communication Port.

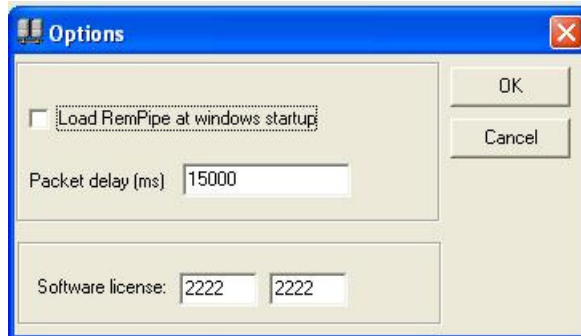
Note: the CellPipe use default gateway setting. Use this settings carefully.

7. Click on the "*Virtual Port*" down-droop-list and choose a COM number.
8. Click on *accept*.



Setting options:

1. Click on *Tools>>Options* the following dialogue box appears.



2. To load the CellPipe program when windows start check the "Load RemPipe at..." checkbox.
3. On the "Packet delay" textbox, type a number for packet frequency delay (recommended value: 15000 Msec).
4. On the "Software license" textbox, type a license code of the CellPipe

Loading the project:

1. Make sure that no client software is running on the background.
2. To load the program on your computer click on the "Not activated" button, the button will turn to green, while changing its label to *Activated*. In addition, the MS windows find new hardware sound will be initiated.
3. When the RPipe is connected, the 'Not activated' label(s), in the status column, are changed to *Activated*, and the 2 gray lights, in the # column, are changed to green.
4. The lights, in the # column, flash between red and green when data are being received and transmitted.